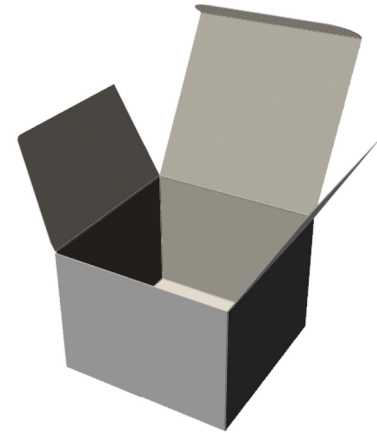


Parkway Plastics, Inc. 561 Stelton Road, Piscataway, NJ 08854  
T: (732) 752-3636 ~ P: (732) 752-4097  
[www.parkwayjars.com/shop](http://www.parkwayjars.com/shop)  
email: [sales@parkwayjars.com](mailto:sales@parkwayjars.com)

**Part Description:** AB0890800 - Folding Carton  
**Design#:** J40413A.ARD



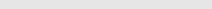
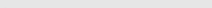
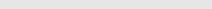
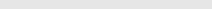
**Material:** .016 SBS

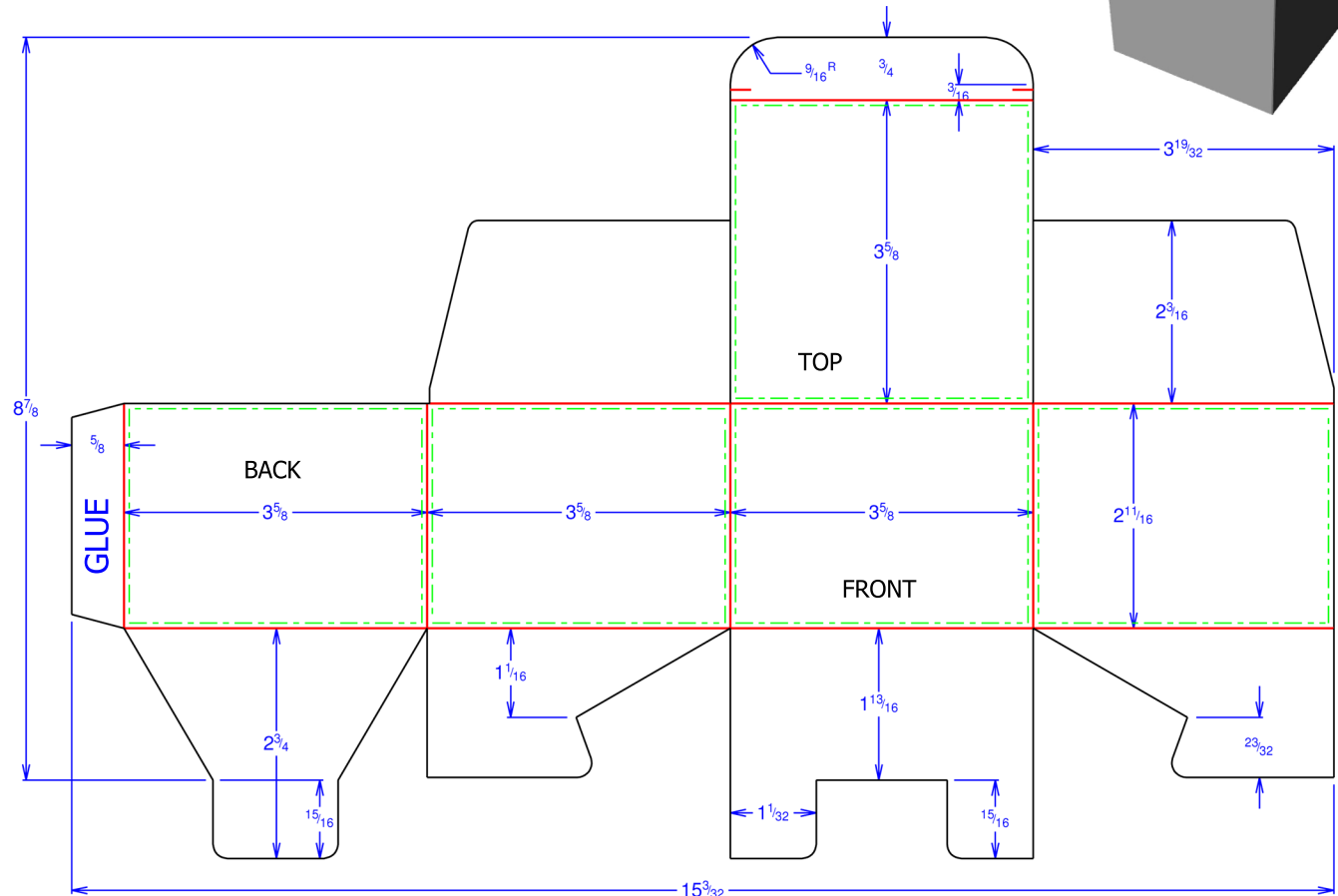
**Design Size:**  $3\frac{5}{8} \times 3\frac{5}{8} \times 2\frac{11}{16}$

**Blank Width:**  $15 + \frac{3}{32}$

**Blank Height:**  $9 + \frac{13}{16}$

**Line Legend**

- Cut 
- Crease 
- Outside Bleed 
- Safe Copy Area 



\* The folding carton die line displayed is just one option available. Different functions/uses could require a different style folding carton. We do not recommend this style or size folding carton for any specific use. We strongly suggest that all customers receive samples for testing to verify acceptability in advance of making any purchasing decisions.