

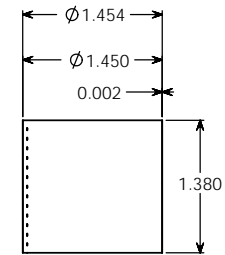
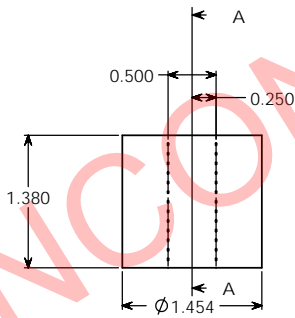
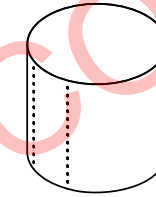
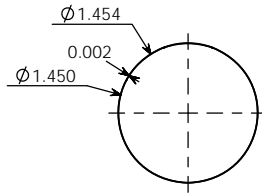
PROPERTY OF

PPI IS NOT RESPONSIBLE FOR PRODUCT COMPATABILITY.
NOT ALL MATERIALS ARE SUITABLE FOR ALL APPLICATIONS.



PARKWAY PLASTICS

IT IS THE BUYER'S SOLE RESPONSIBILITY TO TEST THE COMPATIBILITY OF
THEIR PRODUCTS WITH PARKWAY'S PRODUCTS & SERVICES.



SECTION A-A

NOTE:

SHRINKSLEEVES ARE SHIPPED
PRESSED FLAT WITH SPECIFIC WIDTH
& HEIGHT MEASUREMENTS. EACH
MEASUREMENT HAS A TOLERANCE
OF +/- .125 INCHES (3.175 MM).

UNCONTROLLED COPY

PROPRIETARY AND CONFIDENTIAL
THE INFORMATION CONTAINED IN THIS
DRAWING IS THE SOLE PROPERTY OF
PARKWAY PLASTICS INC. ANY
REPRODUCTION IN PART OR AS A WHOLE
WITHOUT THE WRITTEN PERMISSION OF
PARKWAY PLASTICS INC IS PROHIBITED.

WIDTH	HEIGHT	UNLESS OTHERWISE SPECIFIED:	NAME	DATE	PARKWAY PLASTICS INC
58MM	35MM	DIMENSIONS ARE IN INCHES	S.P.	02/02/15	
		TOLERANCES:			
		FRACTIONAL ±			
		ANGULAR: MATCH ± BEND ±	CHECKED		TITLE:
		TWO PLACE DECIMAL ±	ENG APPR		1/4 OZ 33MM TW CLEAR
		THREE PLACE DECIMAL ±	MFG APPR		PVC SHRINK SLEEVE
		INTERPRET GEOMETRIC TOLERANCING PER:	D.A.		SIZE
		MATERIAL	COMMENTS:		DWG. NO.
NEXT ASSY	USED ON	FINISH			B0330025 Shrink Sleeve
APPLICATION		DO NOT SCALE DRAWING			REV
					SCALE: 1:1
					WEIGHT:
					SHEET 1 OF 1

PROPERTY OF

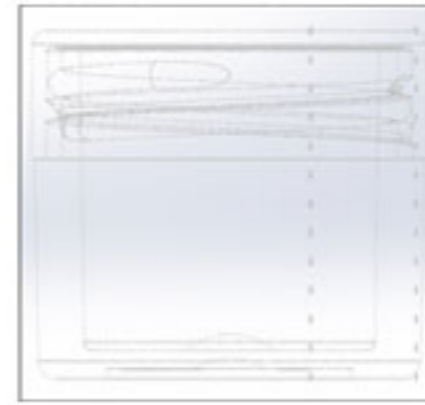
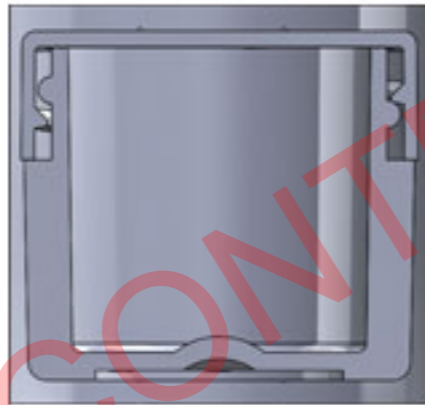
PPI IS NOT RESPONSIBLE FOR PRODUCT COMPATABILITY.
NOT ALL MATERIALS ARE SUITABLE FOR ALL APPLICATIONS.



PARKWAY PLASTICS

IT IS THE BUYER'S SOLE RESPONSIBILITY TO TEST THE COMPATILITY OF
THEIR PRODUCTS WITH PARKWAY'S PRODUCTS & SERVICES.

**1/4 OZ 33MM TW CLEAR PVC SHRINK SLEEVE
58MM X 35MM**



UNCONTROLLED COPY